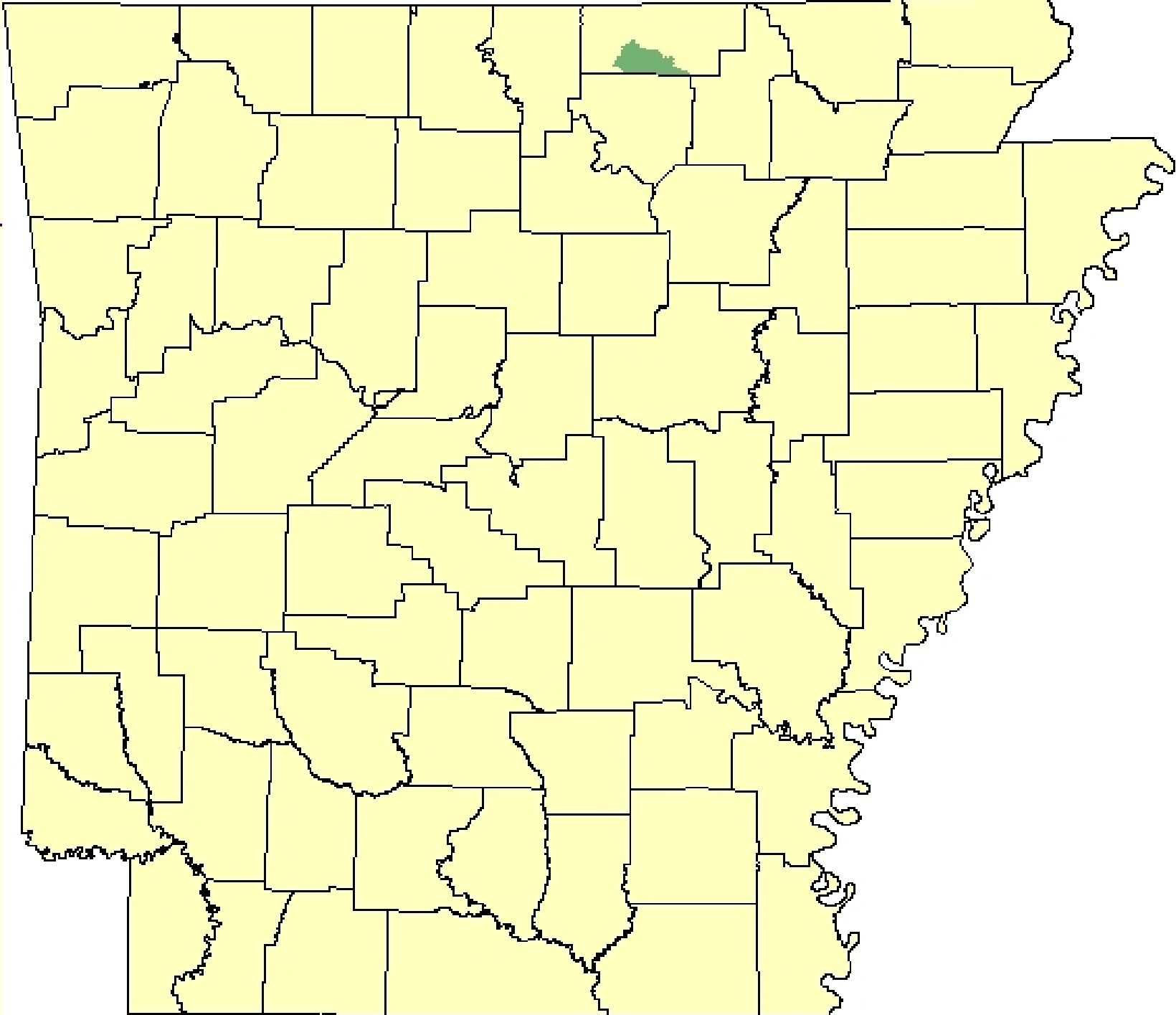
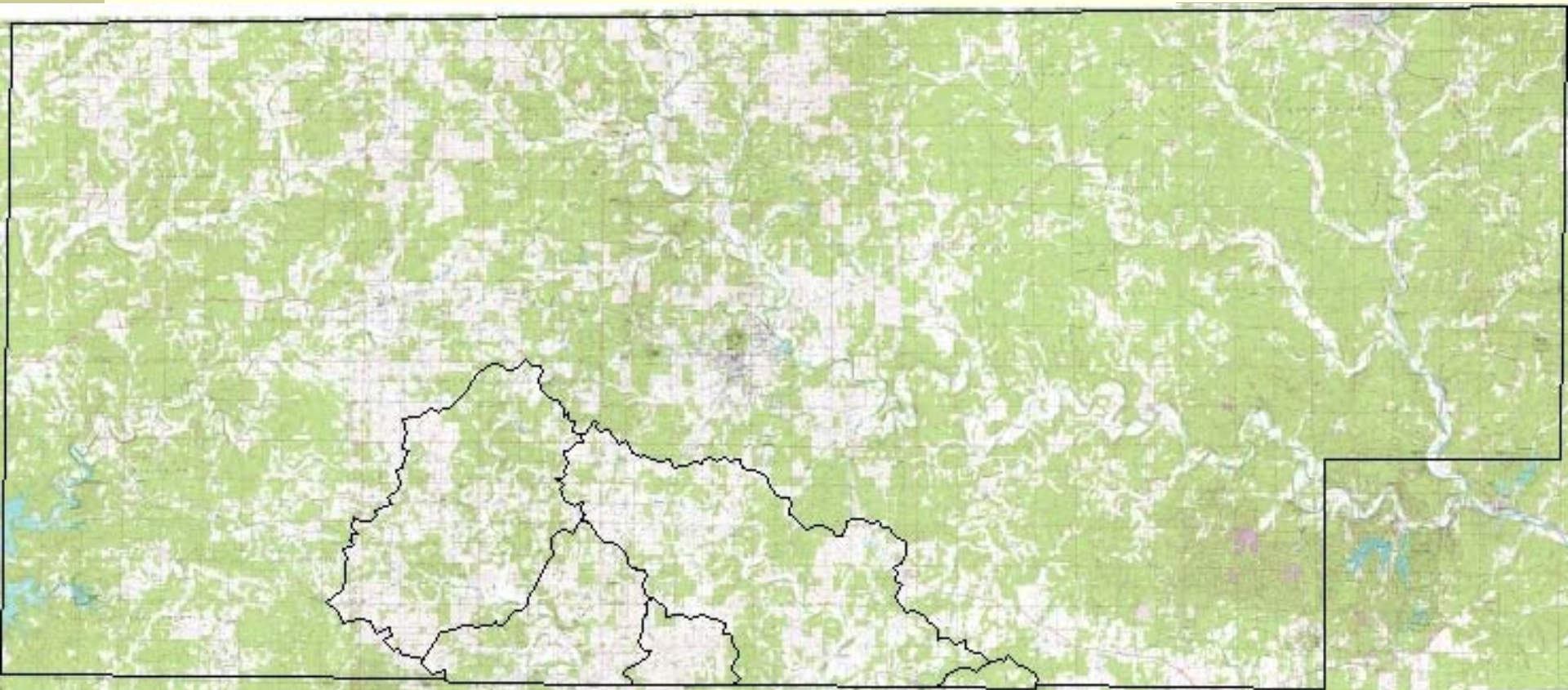


Strawberry SubWatershed Project (08-500)

Fulton County Conservation District
Arkansas Natural Resource Commission
U S Environmental Protection Agency





Priorities for Planning

- Farms that are within or partially within a wellhead protection area.
- All farms with riparian access along blue line streams as indicated on the 7.5 minute USGS quadrangle maps.
- All farms that lie within 1 Mile of a blue line stream.

Getting the word out

- Word of mouth
- Newsletter
- Grass Conference
- Equipment Rentals
- Newspaper
- Television
- Coffee shop
- Field days





JOHNSON













BMP's Installed

- Pasture and Hayland Planting (512).....248 acres
- Fence (382).....83,392.3 ft
- Watering Facilities (614).....15 ea
- Heavy Use Area Protection (561).....1.4 ac
- Brush Management (314).....2620.6 ac
- Pond (378).....2 ea
- *Pipeline (516).....2817 ft*
- *Water Well (642).....2 ea*

Conservation Planning

- 127 Farm Plans
- 84 Contracts for \$269,072.00
- \$202,612.00 paid to farmers as of 7/1/2010
- 24,537 ft of streams with livestock excluded

Conservation Planning

QUESTIONS
OR
COMMENTS?????

